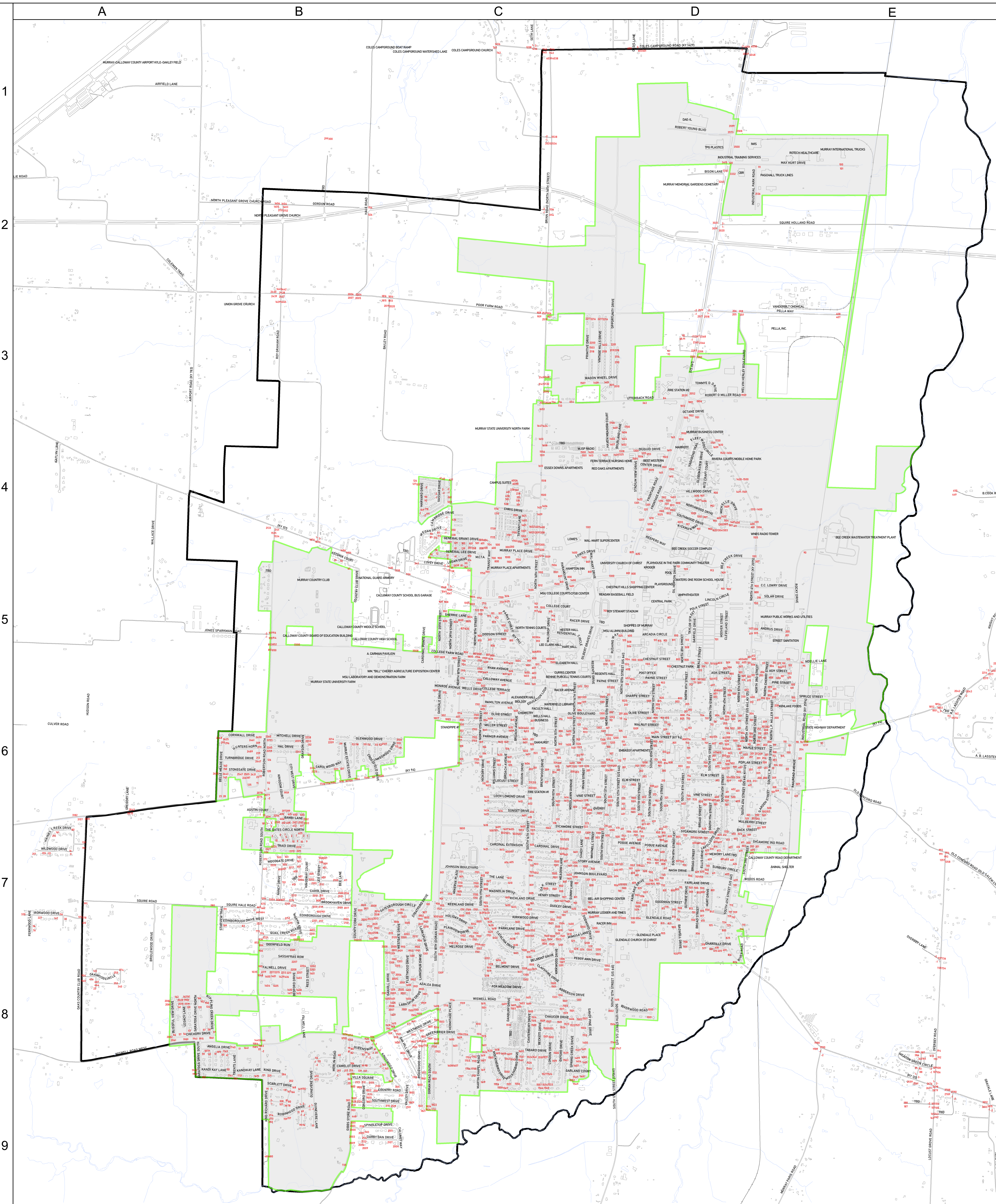


# Street Index

A		B		C		D		E		M	
ALBANY RD.	115, 116, 117	ALBANY RD.	115, 116, 117	ALBANY RD.	115, 116, 117	ALBANY RD.	115, 116, 117	ALBANY RD.	115, 116, 117	ALBANY RD.	115, 116, 117
ALBANY RD.	115, 116, 117	ALBANY RD.	115, 116, 117	ALBANY RD.	115, 116, 117	ALBANY RD.	115, 116, 117	ALBANY RD.	115, 116, 117	ALBANY RD.	115, 116, 117

## Numbered Streets

1ST ST.	115, 116, 117	1ST ST.	115, 116, 117
2ND ST.	115, 116, 117	2ND ST.	115, 116, 117
3RD ST.	115, 116, 117	3RD ST.	115, 116, 117
4TH ST.	115, 116, 117	4TH ST.	115, 116, 117
5TH ST.	115, 116, 117	5TH ST.	115, 116, 117
6TH ST.	115, 116, 117	6TH ST.	115, 116, 117
7TH ST.	115, 116, 117	7TH ST.	115, 116, 117
8TH ST.	115, 116, 117	8TH ST.	115, 116, 117
9TH ST.	115, 116, 117	9TH ST.	115, 116, 117
10TH ST.	115, 116, 117	10TH ST.	115, 116, 117
11TH ST.	115, 116, 117	11TH ST.	115, 116, 117
12TH ST.	115, 116, 117	12TH ST.	115, 116, 117
13TH ST.	115, 116, 117	13TH ST.	115, 116, 117
14TH ST.	115, 116, 117	14TH ST.	115, 116, 117
15TH ST.	115, 116, 117	15TH ST.	115, 116, 117
16TH ST.	115, 116, 117	16TH ST.	115, 116, 117
17TH ST.	115, 116, 117	17TH ST.	115, 116, 117
18TH ST.	115, 116, 117	18TH ST.	115, 116, 117
19TH ST.	115, 116, 117	19TH ST.	115, 116, 117
20TH ST.	115, 116, 117	20TH ST.	115, 116, 117



STREET MAP  
 DEPARTMENT OF  
 PLANNING & ENGINEERING  
 CITY OF  
**MURRAY**  
 CALLOWAY COUNTY  
 KENTUCKY  
 JANUARY, 2024

**Legend**

- City Limits
- Roads
- Urban Services Area

Original base map produced by photogrammetric methods from photography dated 01 April, 1998 and updated from digital orthophotography dated 02 March, 2017. This mapping conforms to National Map Accuracy Standards. Control based on 1983 N.A.D. All utility system data has been transferred from existing source documents and field notes and has not been precision located using photogrammetry or other surveying methods.

MAPPING BY THE CITY OF MURRAY

This map or mapping system has been prepared for the use of the City of Murray ONLY. The City of Murray, its agents or assigns, make no representations as to its accuracy. It should not be relied upon by any other person, organization, or entity.

